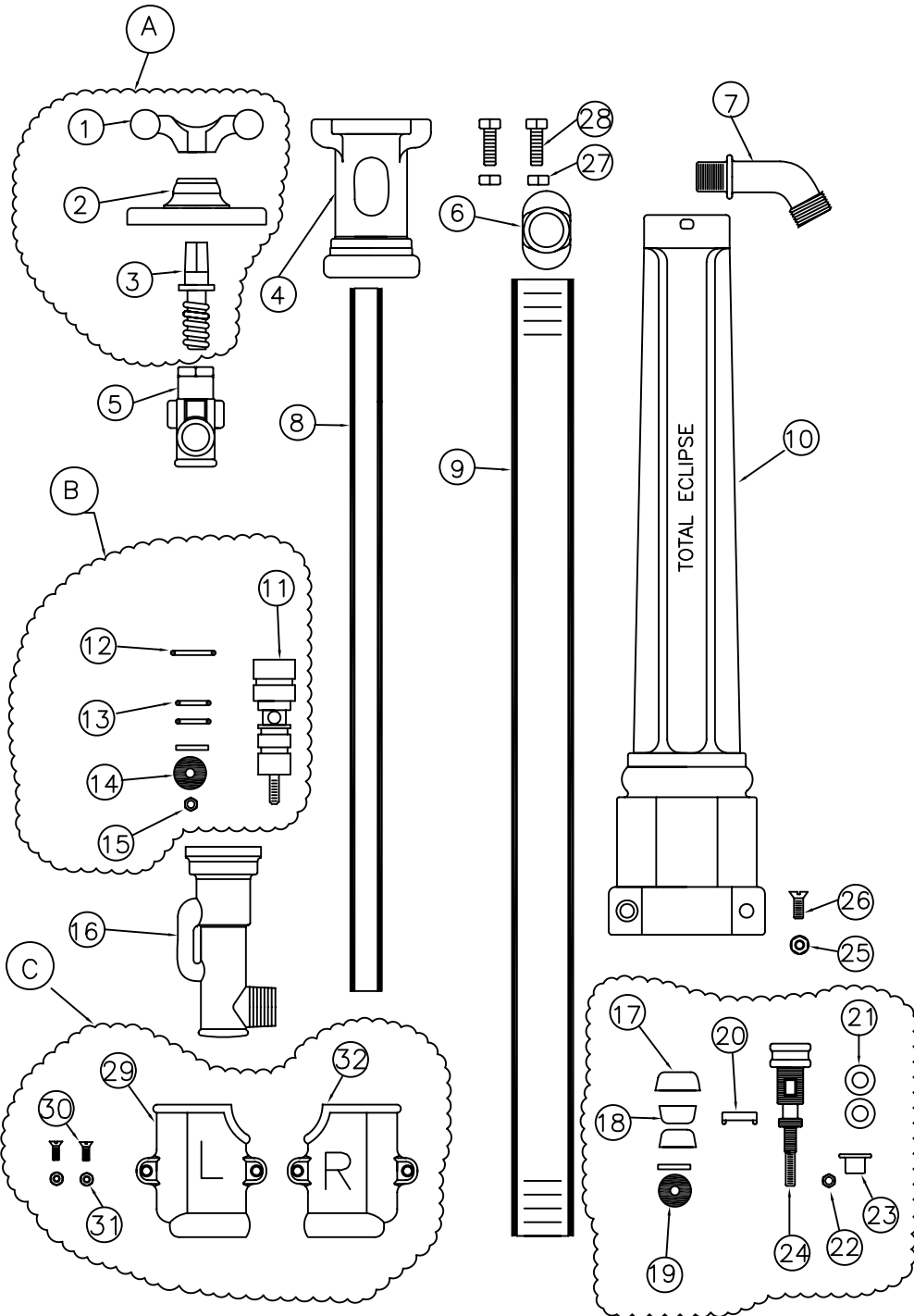


#1-1" YARD HYDRANT



NO.	QTY.	PART NUMBER	DESCRIPTION
1	1	134	HANDLE
2	1	125	CAP
3	1	138	SCREW
4	1	316	NECK
5	1	319	ELBOW
6	1	323	SLIDE
7	1	321	NOZZLE
8	SPECIFY BURY	¾ GAL.	¾ GALVANIZED PIPE
9	SPECIFY BURY	1 ½ PIPE	1 ½ STEEL PIPE
10	2	183	HYDRANT CASE
11	1	308-NS	NEW STYLE PLUNGER STEM
12	1	327C	N.S. PLUNGER O-RING
13	2	327D	N.S. PLUNGER O-RING
14	1	329	SEAT RUBBER
15	1	312	BRASS NUT FOR PLUNGER
16	1	301	VALVE
17	1	326	LEATHER CUP
18	2	327A	LEATHER CUP
19	1	329	SEAT RUBBER
20	1	310A	BRASS WING NUT
21	2	24S	S.S. WASHER
22	1	312	BRASS NUT FOR PLUNGER
23	1	309A	BRASS CONE WASHER
24	1	308	PLUNGER STEM
25	2	345-N	HYDRANT CASE NUT
26	2	345-S	HYDRANT CASE SCREW
27	2	344-N	TOP CAP NUT
28	2	344-B	TOP CAP BOLT
29	1	116L.H.	LEFT HAND SAND CASE
30	2	346-S	SAND CASE SCREW
31	2	346-N	SAND CASE NUT
32	1	116R.H.	RIGHT HAND SAND CASE

ASSEMBLIES

ASSEMBLY	QTY.	PART NUMBER	DESCRIPTION
A	1	X131	CAP, HANDLE & SCREW COMPLETE W/BOLTS
B	1	X306NS	NEW STYLE PLUNGER COMPLETE
C	1	X116	SAND CASING COMPLETE
D	1	X306	OLD STYLE PLUNGER COMPLETE
XFIG-A-NS	12-14		NEW STYLE VALVE WASHER SET
XFIG-A	17-19		OLD STYLE VALVE WASHER SET

