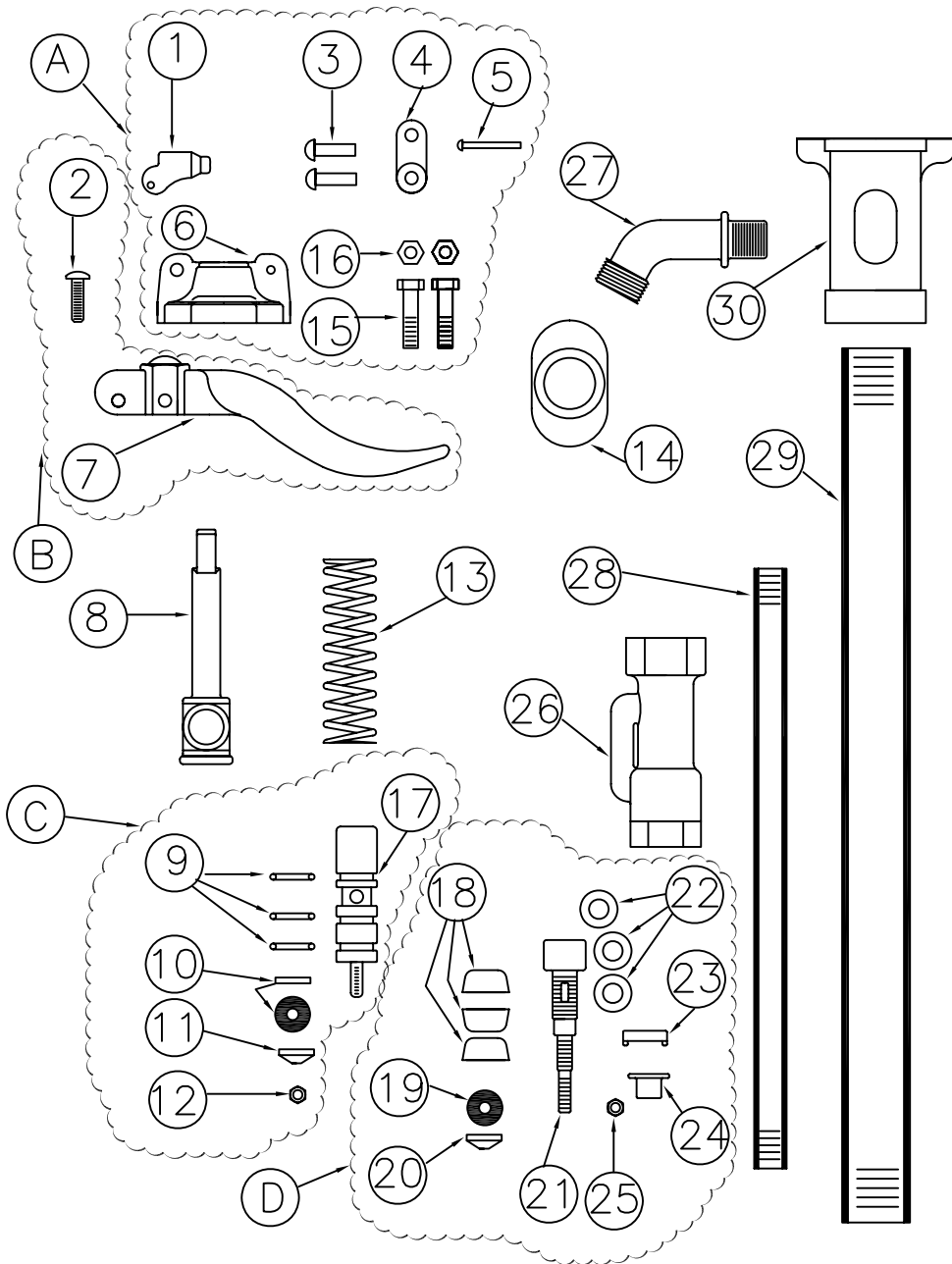


# 909 YARD HYDRANT



NO.	QTY.	PART NUMBER	DESCRIPTION
1	1	403	CATCH
2	1	361	SCREW
3	2	443	RIVIT FOR LINK
4	1	402	LINK
5	1	442	RIVIT FOR CATCH
6	1	400	TOP CAP
7	1	404	HANDLE
8	1	908	STEM
9	1	10220	O-RINGS
10	1	418-A	FLAT RUBBER SEAT
11	1	418-B	BEVELED SEAT
12	1	311	NUT
13	1	415	SPRING
14	1	320	SLIDE
15	2	344-B	BOLT
16	2	344-N	NUT
17	1	905-NS	NEW STYLE STEM
18	3	327	LEATHER CUPS
19	1	418-A	FLAT RUBBER SEAT
20	1	418-B	BEVELED SEAT
21	1	905	OLD STYLE STEM
22	3	88-14	S.S. WASHERS
23	1	837	BRASS WING NUT
24	1	309	CONE WASHER
25	1	311	NUT
26	1	900	VALVE
27	1	320	NOZZLE
28		SPECIFY BURY	3/8" GAL. PIPE
29		SPECIFY BURY	1" GAL PIPE
30	1	915	NECK

## ASSEMBLIES

A	1	X 400	CAP COMPLETE
B	1	X 404	HANDLE COMPLETE
C	1	X 905-NS	NEW STYLE PLUNGER COMPLETE
D	1	X 905	OLD STYLE PLUNGER COMPLETE
XFIG K NEW STYLE		9-11	NEW STYLE REPAIR KIT
XFIG K		18-20	OLD STYLE REPAIR KIT

