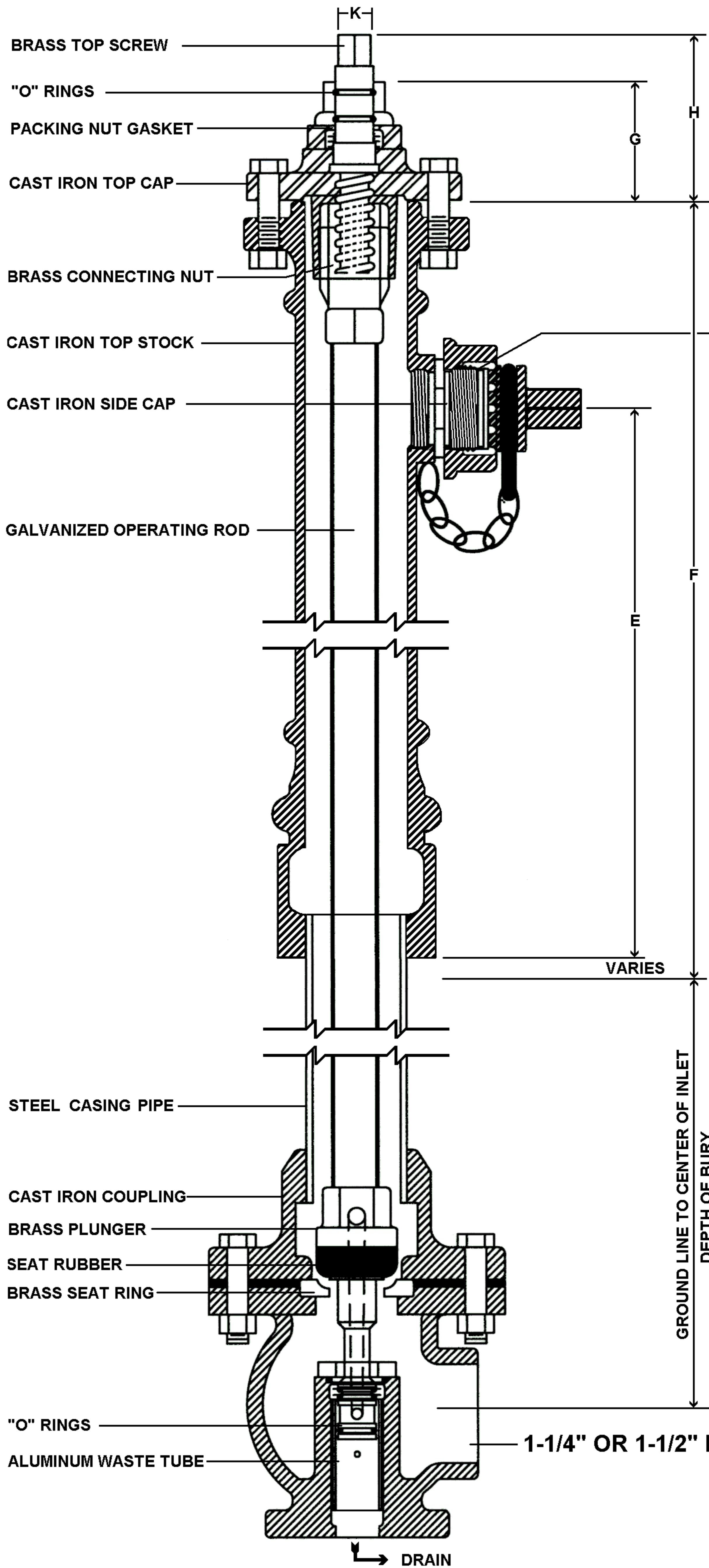


ECLIPSE # 2A POST HYDRANT



Inlet Pressure (psi)	Flow Rate (gpm)
75	290
100	337
125	375
150	413

1-1/4" MIP OR 1-1/2" NST NOZZLE

ECLIPSE POST HYDRANTS - NO. 2A

	DESCRIPTION	DIM.
A	DIAMETER OF VALVE OPENING	1 1/2"
B	DIAMETER OF CASING PIPE	2"
C	INSIDE DIAMETER OF NOZZLE	1 3/16"
D	OUTSIDE DIAMETER OF OPERATING ROD	1"
E	BOTTOM OF TOP STOCK TO OUTLET	13 3/4"
F	HEIGHT OF TOP STOCK	18 3/4"
G	HEIGHT TOP CAP	2"
H	BOTTOM OF TOP CAP TO TOP OF OPERATING SCREW	3 3/4"
J	HEIGHT OF BOTTOM INLET	6"
K	SIZE & SHAPE OF TOP SCREW NUT	5/8" ■

VARIES

GROUND LINE TO CENTER OF INLET
DEPTH OF BURY

1-1/4" OR 1-1/2" FIP INLET

DRAIN

ECLIPSE
TRADEMARK
REGISTERED
Since 1857



KUPFERLE FOUNDRY COMPANY

2511 NORTH STREET, ST. LOUIS, MO 63102
(314) 231-8738 FAX 231-2820 (800) 231-3990