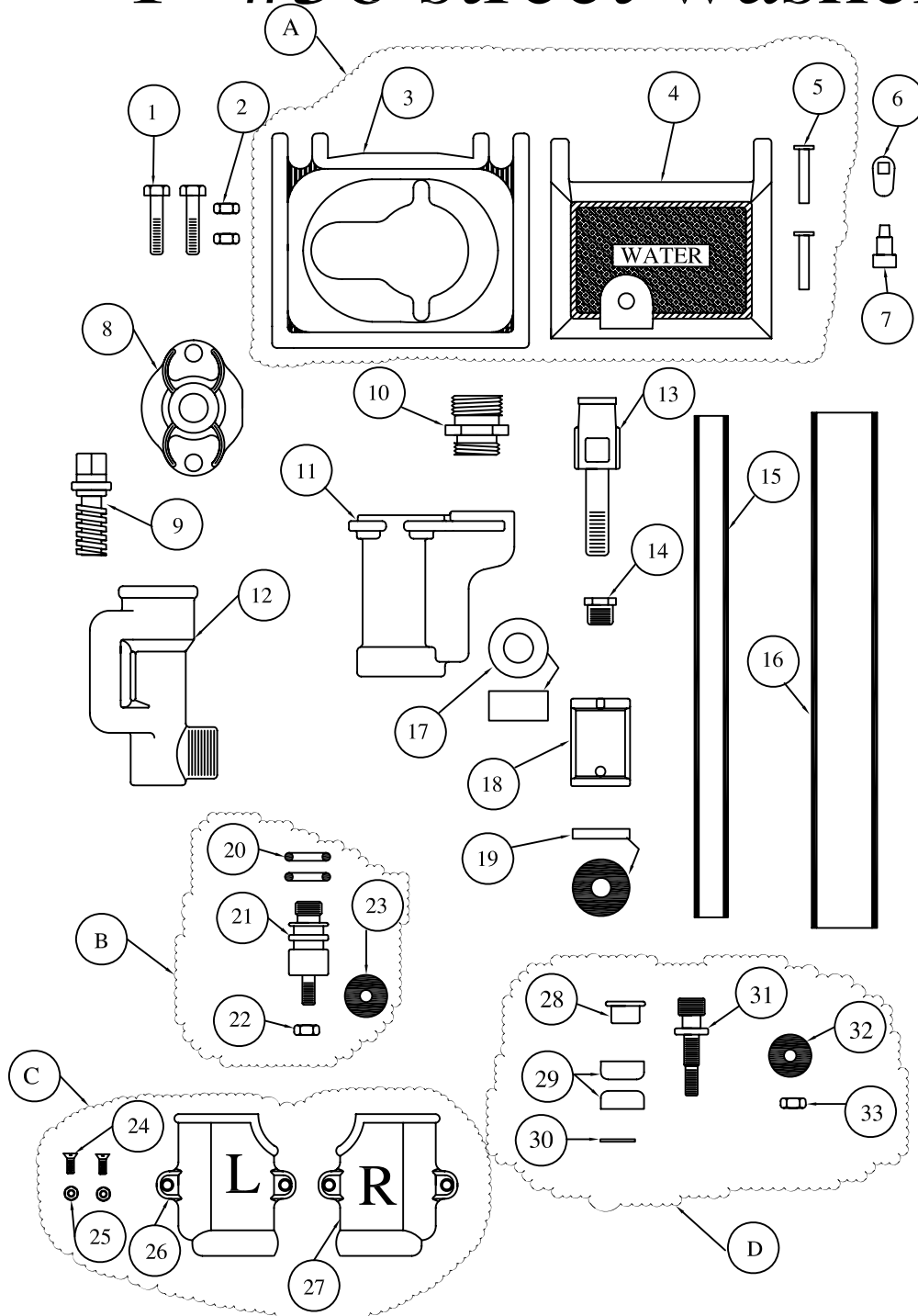


1" #36 street washer



NO.	QTY.	PART NUMBER	DESCRIPTION
1	2	469-B	BOLT
2	2	469-N	NUT
3	1	332	BOX
4	1	FIG.W	LID
5	2	347	RIVET
6	1	KF LOCK	LATCH
7	1	KF KEY	KEY
8	1	462	TOP CAP
9	1	141	SCREW
10	1	468	NOZZLE
11	1	464-A	YOKE
12	1	450	VALVE
13	1	455	STEM
14	1	470	REDUCER
15	SPECIFY BURY	1/2" PIPE	1/2" STEEL PIPE
16	SPECIFY BURY	1 1/4" PIPE	1 1/4" STEEL PIPE
17	1	353	BUSHING
18	1	457	SOCKET
19	1	466	RUBER GASKET
20	2	327-A	O-RING
21	1	452-NS	NS- PLUNGER
22	1	312	BRASS NUT
23	1	329	RUBBER SEAT
24	2	346-S	SCREW
25	2	346-N	NUT
26	1	116 L.H.	L.H. SAND CASE
27	1	116 R.H.	R.H. SAND CASE
28	1	309-A	THUMBLE
29	2	327-A	LEATHER CUP
30	1	24-S	WASHER
31	1	452	OLD STYLE PLUNGER
32	1	329	RUBBER SEAT
33	1	312	BRASS NUT

ASSEMBLIES

ASSEMBLY	QTY.	PART NUMBER	DESCRIPTION
A	1	X332	BOX COMPLETE
B	1	X452-NS	PLUNGER NEW STYLE
C	1	X116	SAND CASES COMPLETE
D	1	X452	OLD STYLE PLUNGER
E	1	XFIG-E - N.S.	20&23
F	1	XFIG - E	29,30&32

