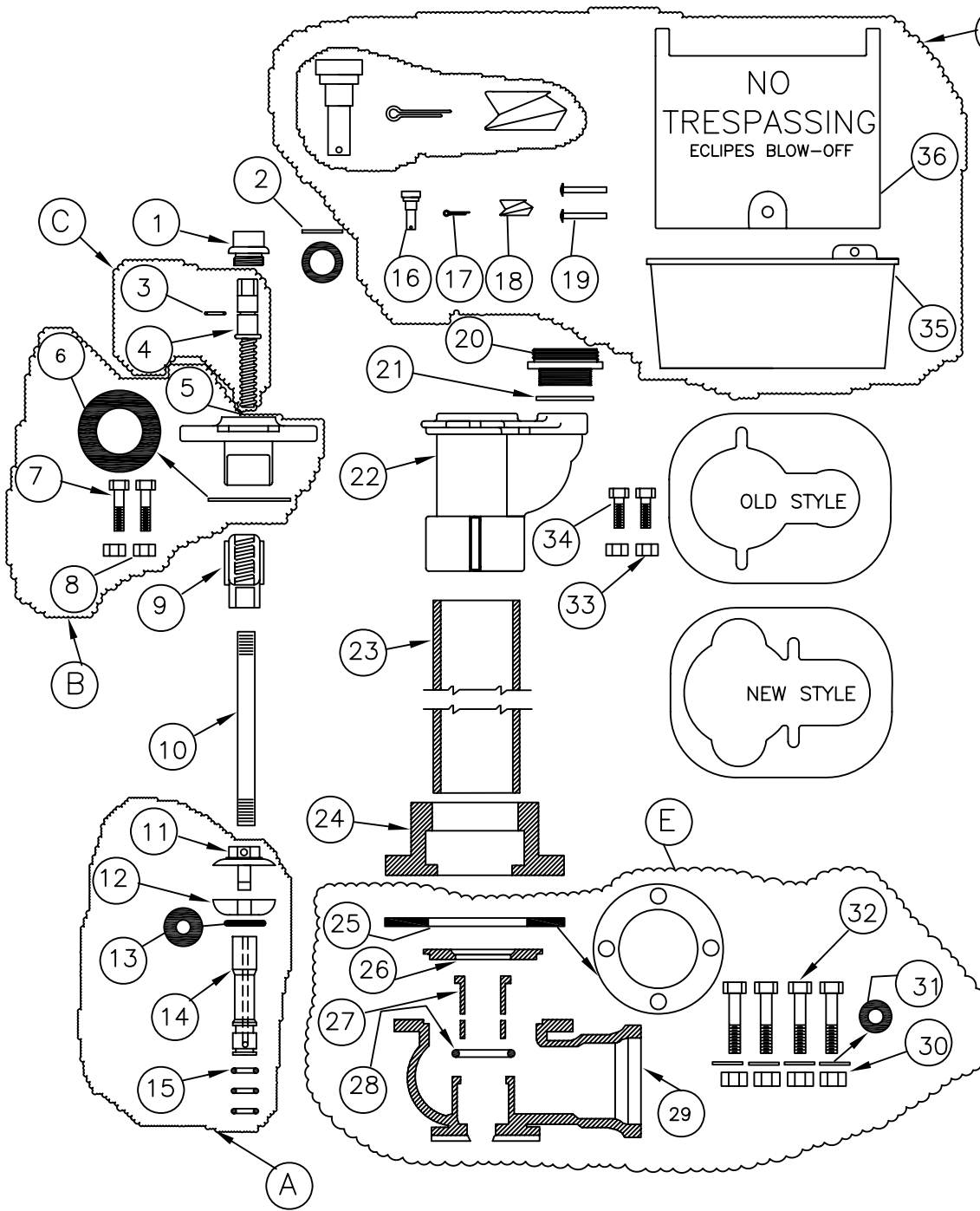


# ④ #85 BLOW-OFF



NO.	QTY.	PART NUMBER	DESCRIPTION
1	1	620	PACKING NUT
2	1	770	GASKET
3	2	77N	O-RING
4	1	#4	OPERATING SCREW
5	1	#854	TOP CAP
6	1	857	TOP CAP GASKET
7	2	628A-B	TOP CAP BOLTS
8	2	629A-N	NUT
9	1	510	CONNECTING NUT
10	1	3/4 GAL	OPERATING ROD
11	1	537-P	PLUNGER TOP
12	1	541	SEAT RUBBER
13	1	539W	S.S. WASHER
14	1	539L2	PLUNGER TUBE
15	3	20R	O-RING
16	1	85WL-INSERT	#85 WORM LOCK
17	1	COTTER PIN	
18	1	85WL-GEAR	85 WORM LOCK GEAR
19	2	858	BOX RIVETS
20	1	601A	2 1/2 NST NOZZLE
21	1	669	NOZZLE GASKET
22	1	853B-N	NEW STYLE YOKE DUCT.
23	1	3 DUC	3" DUCTILE PIPE
24	1	661	COUPLING
25	1	2-A-NS	BOTTOM GASKET
26	1	521	SEAT RING
27	1	611	WASTE TUBE
28	1	A-19	O-RING
29	1	571	BOTTOM
30	4	629-A-N	BOTTOM NUTS
31	4	1/2 W	BOTTOM BOLT WASHER
32	4	629-A-B	BOTTOM BOLTS
33	2	629A-N	NUT
34	2	10210	BOLT
35	1	852-N	NEW STYLE BOX FOR 85
36	1	851	LID FOR #85 BOX

## ASSEMBLIES

A	1	X531-OUR	N.S.PLUNGER COMPLETE
B	1	X854	TOP CAP COMP.W\BOLTS
C	1	X4	TOP SCREW COMPLETE
D	1	X852-NEW	BOX COMPLETE
E	1		SPECIFY INLET OF BOTTOM

571-E 3" MJ	571-A 2" IP
571-L 4" MJ	571-C 3" IP
	571-D 2" MJ