

# **OPERATIONS AND MAINTENANCE**

## **#7500 & 7600 MAINGUARD BLOW-OFF HYDRANT**

### DESCRIPTION

- A. The hydrants are the #7500 & #7600 Mainguard hydrants, manufactured by John C. Kupferle Foundry Company., 2511 North 9<sup>th</sup> Street, St. Louis, MO 63102. Phone 314-231-8738.
- B. Hydrants are post type with 4" or 6" FIP inlet and 4" FNPT Outlet with plastic plug. All operating parts of the hydrant can be serviced or replaced without digging up or disturbing the supply line connection.

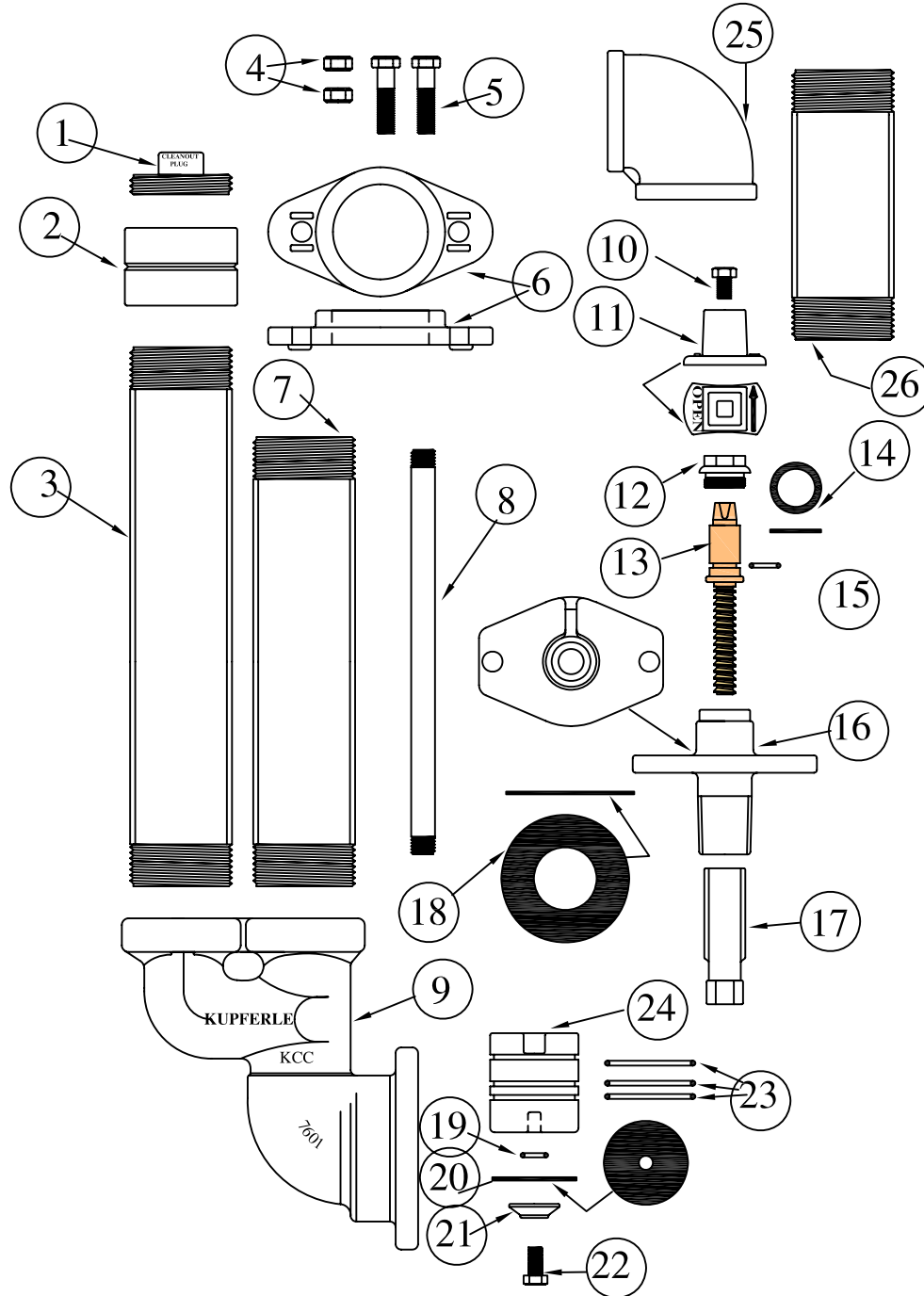
### OPERATION

- A. Hydrant is manually operated by using a standard 2" valve wrench on the top screw or operating nut. Hydrant is opened by turning the top screw to the left or counterclockwise about 12 turns. Hydrant is closed by turning the top screw to the right or clockwise. Hydrant closes against the pressure. Handle should never be forced one way or the other.
- B. The hydrant is self-draining, non-freezing type. When the hydrant is turned off, the inlet valve is closed, and the drain ports are opened, allowing the water in the hydrant to drain out.

### PARTS REPLACEMENT

- A. Replacement parts may be obtained directly from the John C. Kupferle Foundry Company., 813 Hempstead St., St. Louis, MO 63102. Phone 314-231-8738.
- B. Servicing of the hydrant or replacement of worn parts can be accomplished without digging up or disturbing the supply line connection. This can be done by the following two (2) steps:
  - 1. Turn off water supply to the hydrant.
  - 2. Remove the two (2) bolts holding the top cap in place. The top cap and inside operating parts can be lifted out of the hydrant for servicing, repair or replacement.
- C. Hydrant parts are identified and part numbers are listed on the attached parts list.
- D. If hydrants are used on a daily basis, an annual inspection of the valve washers is recommended. A Part No. 7614, Plunger "O"-Rings (3) required and Part No. 10800, Plunger Seat Washer should be kept on hand. When replacing seals, lubricate with a non-toxic oil (vegetable oil, linseed etc.).

# 4" BLOW OFF #7500-#7600



NO.	QTY.	PART NUMBER	DESCRIPTION
1	1	7608	Sch. 40 Threaded plug
2	1	7606	4" Merchant Coupling
3	1	4P	4" Black Pipe
4	2	7611	Nut for 75-7600 Top Cap
5	2	7610	Bolt for 75-7600 Top Cap
6	1	7602	Iron Neck #7500-#7600
7	1	4P	4" Black Pipe
8	1	1 1/16 SR	1 1/16 Solid Round Rod
9	1	7601	4" Inlet Casting
10	1	7615	Screw For Gatevalve Nut
11	1	7612	Gatevalve Nut #75-7
12	1	621	Packing Nut 1 1/4" Pent
13	1	7604	Brass Top Screw
14	1	77MG	Gasket For #4A Pack. Nut
15	1	77M	O-Ring For Slotted Screw
16	1	7603	Iron Top Cap #7500-7600
17	1	7605	Brass Connecting Nut
18	1	7613	Top Cap Gasket#7500-7600
19	1	2030	O-Ring For Brass Washer
20	1	10800	Seat Washer For #TF800
21	1	85W	Brass Washer For #85B
22	1	10810	Bolt For Seat Washer
23	3	7614	Plunger O-Ring-#7500-76
24	1	7609	Plunger For #7500-#7600
25	1	7607	4" 90 Deg. Elbow
26	1	4P	4" Black Pipe

A	1	X7609	Plunger Repair Kit Comp.
B	1	X7604	Top Screw Repair Kit Com.

