

OPERATIONS AND MAINTENANCE
INSTRUCTIONS
FOR THE TF200 POST HYDRANTS

DESCRIPTION

- A. THE HYDRANTS ARE TRUFLOW #TF200 POST HYDRANTS MANUFACTURED BY JOHN C. KUPFERLE FOUNDRY CO. 2511 North 9th STREET, ST. LOUIS, MO. 63102. PHONE 314-231-8738, FAX 314-231-2820
- B. HYDRANTS ARE POST TYPE WITH A ____ FIP INLET AND A ____ NST NOZZLE ON THE OUTLET. ALL OPERATING PARTS OF THE HYDRANT CAN BE SERVICED OR REPLACED WITHOUT DIGGING UP OR DISTURBING THE SUPPLY LINE CONNETION.

OPERATION

- A. HYDRANT IS MANUALLY OPERATED BY USING A HYDRANT WRENCH, BALL WHEEL HANDLE OR HANDWHEEL ON THE TOP SCREW OR OPERATING NUT. HYDRANT OPENS BY TURNING THE TOP SCREW TO THE LEFT OR COUNTERCLOCKWISE. HYDRANT CLOSSES BY TURNING THE TOP SCREW TO THE RIGHT OR CLOCKWISE. HYDRANT CLOSSES AGAINST THE PRESSURE. TOP SCREW SHOULD NEVER BE FORCED ONE WAY OR THE OTHER.
- B. THE HYDRANT IS A SELF-DRAINING, NON-FREEZE TYPE. WHEN THE HYDRANT IS TURNED OFF, THE INLET VALVE IS CLOSED AND THE DRAIN PORTS ARE OPENED ALLOWING WATER IN THE HYDRANT AND TRENCH STOCK TO DRAIN OUT THROUGH THE DRAIN OPENING IN THE IRON BASIN.

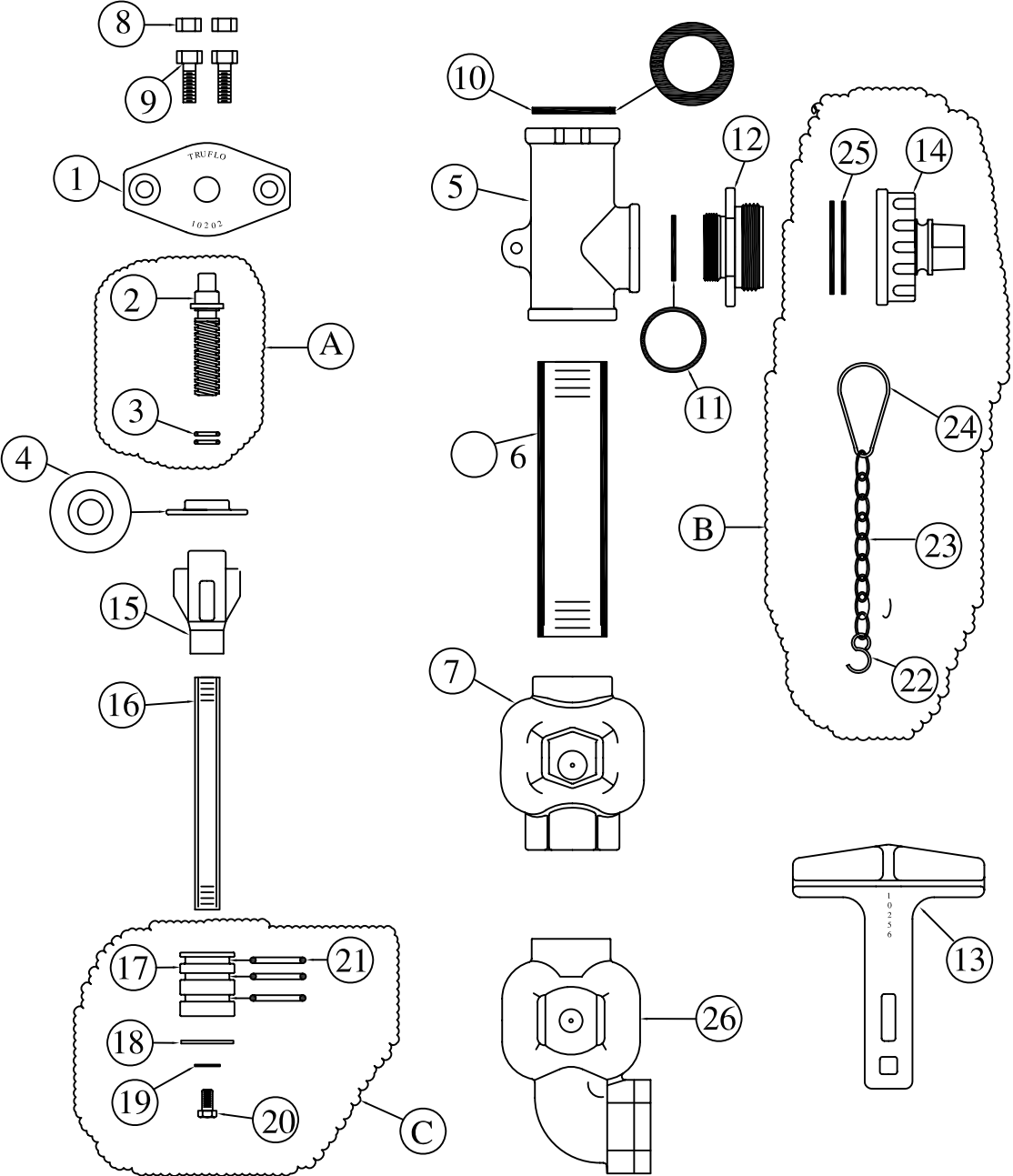
INSTALLATION

- A. SET HYDRANT IN A SUFFICIENT SUPPLY OF CRUSHED STONE OR GRAVEL TO INSURE DRAINAGE FROM THE DRAIN HOLE IN THE HYDRANT BOTTOM.
- B. SUPPLY LINES **MUST** BE FLUSHED FREE OF ROCK, GRAVEL AND OTHER DEBRIS BEFORE CONNECTING THE HYDRANT.
- C. INSTRUCTIONS OF THE AMERICAN WATER WORKS ASSOCIATION SHOULD BE FOLLOWED WHEN PLACING AND TESTING HYDRANT.

PARTS REPLACEMENT



- A. REPLACEMENT PARTS MAY BE OBTAINED FROM ANY WATER WORKS DISTRIBUTOR. A LIST OF DISTRIBUTORS MAY BE OBTAINED BY CALLING KUPFERLE FOUNDRY CO. AT 800-231-3990.
- B. SERVICING OF THE HYDRANT OR REPLACEMENT OF WORN PARTS CAN BE ACCOMPLISHED WITHOUT DIGGING UP OR DISTURBING THE SUPPLY LINE CONNECCTION. THIS IS DONE BY REMOVING THE TWO (2) BOLTS HOLDING THE TOP CAP IN PLACE. THE TOP CAP AND INSIDE OPERATING PARTS CAN BE LIFTED OUT OF THE HYDRANT FOR SERVICING REPAIR OR REPLACEMENT.
- C. HYDRANT PARTS ARE IDENTIFIED AND PART NUMBERS ARE LISTED ON THE FOLLOWING DETAIL SHEETS.
 - a. TRUFLOW #TF200 DETAIL DRAWING
 - b. PARTS LIST SHEETS
- D. IF HYDRANTS ARE USED DAILY AS ANNUAL INSPECTION OF THE O-RINGS AND SEAT RUBBER ARE RECOMMENDED. A #77D O-RING (QTY 3 REQUIRED) & #77I SEAT RUBBER (QTY 1 – REQUIRED)
- E. 3 - O-RINGS & 1 – SEAT RUBBER SHOULD BE KEPT ON HAND. WHEN REPLACING PARTS, LUBRICATE WITH A NON-TOXIC OIL (VEGETABLE, LINSEED, ECT.) BEFORE REINSERTING INTO HYDRANT.
- F. FOR PROPER OPERATION, THE HYDRANT SHOULD HAVE 6 BUT NO MORE THAN 7 FULL TURNS ON THE OPERATING NUT.

MODEL TF 200 2" BLOW OFF



NO.	QTY.	PART NUMBER	DESCRIPTION
1	1	10202	TOP CAP
2	1	10204	BRASS TOP SCREW
3	2	10220	O-RING FOR SCREW
4	1	10243	BRASS WASHER
5	1	10201	IRON HEADSTOCK
6	BURY	2P	2" STEEL PIPE
7	1	57V	DUAL PORT STRAIGHT VALVE
8	2	629A-N	NUT - #2, #2A & #85 HYD.
9	2	10210	BOLT FOR TF200 TOP CAP
10	1	10222	TOP CAP GASKET
11	1	669	GASKET FOR PACKING NUT
12	SIZE	601A	NOZZLE 2-1/2" NST
13	1	10256	LOCKING DEVICE
14	SIZE	592C	2-1/2" NST SIDE CAP
15	1	10241	BRASS CONNECTING NUT
16	BURY	1/2 P	1/2" STEEL PIPE
17	1	57V-PLUNGER	PLUNGER FOR #57 VALVE
18	1	77I	SEAT RUBBER
19	1	24S	PLUNGER TOP WASHER
20	1	77C	SEAT RUBBER BOLT
21	3	77D	MAINGUARD PLUNGER O-RINGS
22	1	9S	S - HOOK
23	1	CH	#8 JACK CHAIN
24	1	PR	PEAR RING
25	3	A16	NOZZLE GASKET FOR 2-1/2" NST CAP
26	1	58V	DUAL PORT SIDE VALVE

A	1	X10204	OPERATING SCREW ASSEMBLY
B	1	X951-C-2IP	NOZZLE CAP ASSEMBLY - 2" IP
C	1	X57V-PLUNGER	PLUNGER COMPLETE
D			
E			
F			



KUPFERLE FOUNDRY COMPANY
 2511 N 9TH STREET, ST LOUIS, MO 63102
 (314) 231-8738 FAX (314) 231-2820 (800) 231-3990

ECLIPSE
TRADEMARK
REGISTERED
Since 1857



THE KUPFERLE FOUNDRY COMPANY

ATTACHING HANDLE TO TF200 BLOW-OFF HYDRANT

- 1) **REMOVE TOP CAP – UNBOLT SCREWS AND REMOVE TOP CAP**
- 2) **TURN OPERATING SCREW TO THE RIGHT UNTIL IT RELEASES**
- 3) **REFER TO OLD SCREW FOR REFERENCE THEN PUT BRASS WASHER ON NEW OPERATING SCREW.**
- 4) **TURN OPERATING SCREW TO THE LEFT UNTIL ALL THE WAY IN THE HYDRANT**
- 5) **PUT TOP CAP BACK ON HYDRANT**
- 6) **PLACE HANDLE ON TOP OF OPERATING SCREW AND SECURE WITH BRASS WASHER AND SCREW**