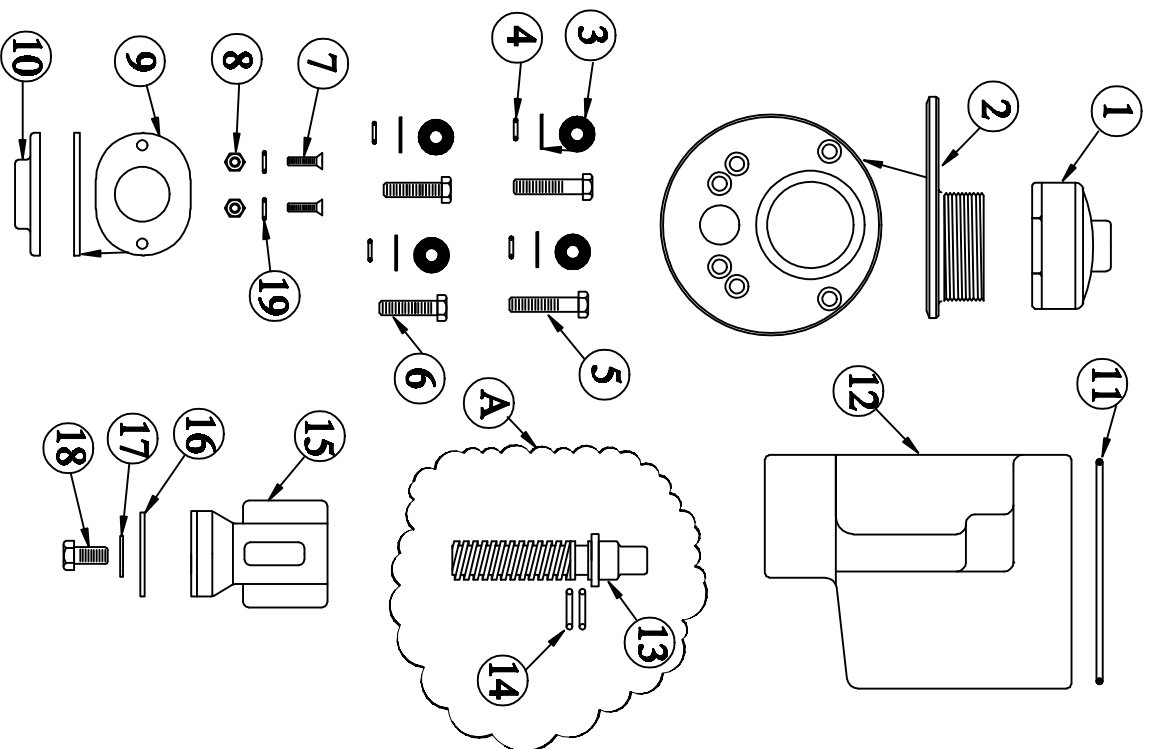


TF #550 BLOW OFF



NO.	QTY.	PART NUMBER	DESCRIPTION
1	1	10504	PLASTIC CAP
2	1	10501	BRASS LID WITH NOZZLE
3	4	10508	WASHER FOR LID BOLTS
4	4	10509	O-RING FOR LID BOLTS
5	2	88-4	LONG BOLT FOR LID
6	2	10506	SHORT BOLT FOR LID
7	2	10507-B	SOCKET BOLT
8	2	345-N	SOCKET BOLT NUT
9	1	10511	GASKET FOR OPF. SCREW
10	1	10500	BRASS WASHER
11	1	10510	O-RING FOR LID
12	1	10502-B550	BRASS CUP FOR TF-550
13	1	10204	BRASS TOP SCREW
14	2	10220	O-RING FOR SCREW
15	1	10551	BRASS PLUNGER
16	1	77-1	SEAT WASHER
17	1	24-S	PLUNGER TOP WASHER
18	1	77-C	SEAT WASHER BOLT
19	2	10518	O-RING FOR SOCKET BOLT

ASSEMBLIES

A	1	X-10204	TOP SCREW COMPLETE
---	---	---------	--------------------

