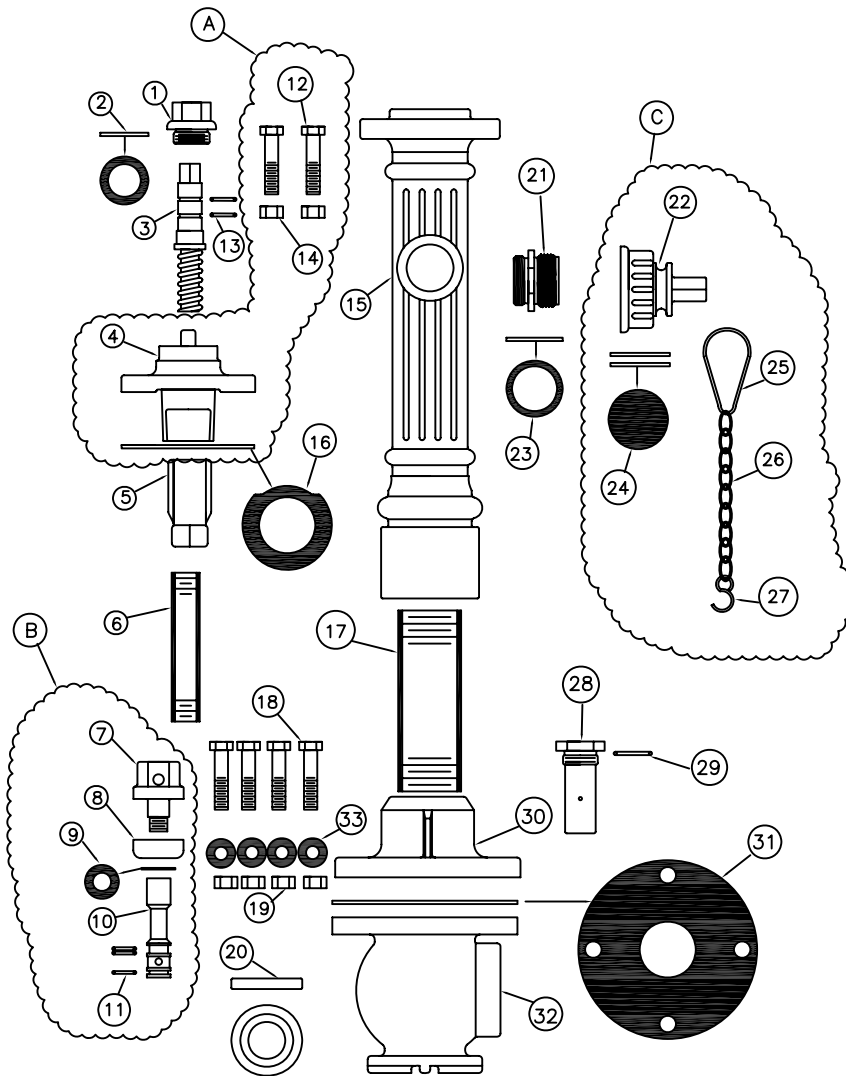


2A HYDRANT



NO.	QTY.	PART NUMBER	DESCRIPTION
1	1	620	PACKING NUT
2	1	770	GASKET FOR PACKING NUT
3	1	500	OPERATING SCREW
4	1	580A	TOP CAP
5	1	510	CONNECTING NUT
6	1	3/4 GAL	3/4 GALVANIZED PIPE
7	1	537-P	PLUNGER TOP
8	1	540	SEAT RUBBER
9	1	539W	S.S. WASHER
10	1	539L2	PLUNGER STEM
11	3	20R	O-RING
12	2	629A-B	BOLT FOR TOP CAP
13	1	77N	O-RING FOR SCREW
14	4	629-A-N	TOP CAP NUTS
15	1	486-A	TOP STOCK
16	1	A1	TOP CAP GASKET
17	1	2P	2" STEEL PIPE
18	4	629-A-B	BOTTOM BOLTS
19	4	629-A-N	BOTTOM NUTS
20	1	520	SEAT RING
21	1	599A	BRASS NOZZLE
22	1	X591C-NST	1 1/2 NST WITH SM. SQ.
23	1	77MG	PACKING NUT GASKET
24	3	A14	NOZZLE CAP GASKET
25	1	PR	PEAR RING
26	8"	CH	# 8 JACK CHAIN
27	1	#9	S-HOOK
28	1	611	WASTE TUBE
29	1	A-19	O-RING
30	1	660	COUPLING
31	1	A7	BOTTOM GASKET
32	1	570	BOTTOM FOR 2A
33	4	3/4W	BOTTOM WASHER

ASSEMBLIES

ASSEMBLY	QTY.	PART NUMBER	DESCRIPTION
A	1	X580A	TOP CAP
B	1	X530	PLUNGER
C	1	X591C-NST	1 1/2 NST SM.SQ.

KUPFERLE FOUNDRY COMPANY

2511 N 9TH STREET, ST LOUIS, MO 63102
 (314) 231-8738 FAX (314) 231-2820 (800) 231-3990