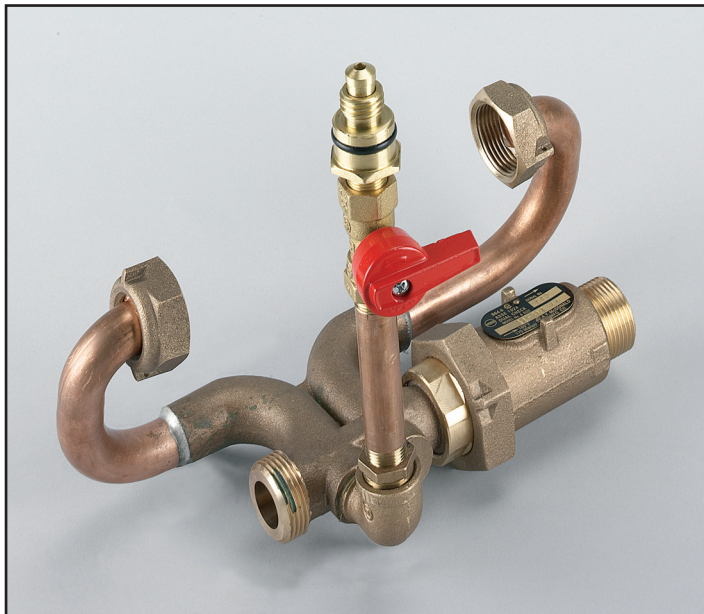




MainGuard #94WM Sampling Station



Sampling rod features a multi-directional blow-off and sampling bib



Sampling rod and protective travel case available

MAINGUARD™

FEATURES

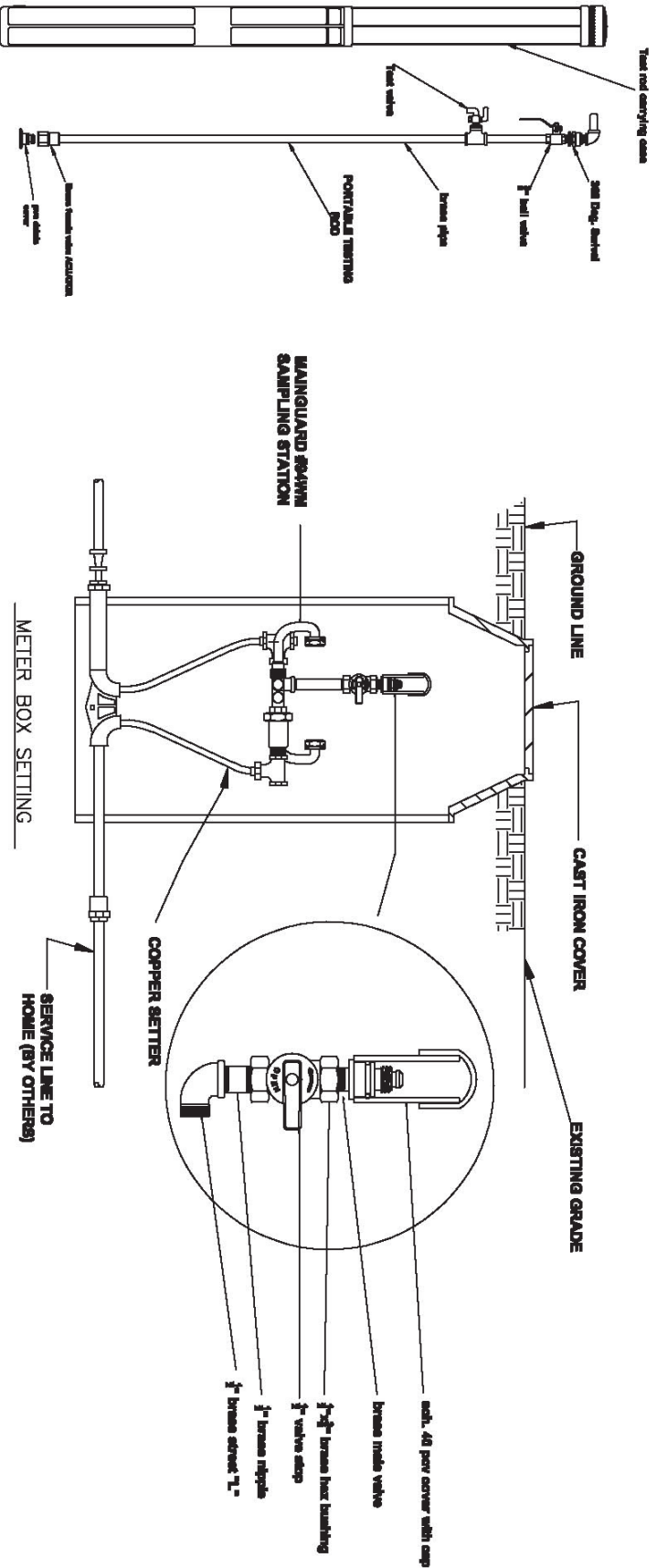
- All brass waterway
- Fits inside a standard meter box (see back page)
- Spring-loaded valve opens and closes when sampling rod attached or removed
- Threaded valve makes it easy to attach/detach from standing position
- Custom-fitted O-ring PVC cap to protect sampling valve
- Samples pulled from water main side of the resetter
- All brass sampling rod w/ protective travel case (sold separately)
- Standard dual check valve included
- Fully serviceable without interrupting residential service

2511 North 9th Street
St. Louis, MO 63102

1-800-231-3990
www.hydrants.com


THE KUPFERLE FOUNDRY COMPANY
Since 1857

#94WM METER BOX SAMPLING STATION



Sampling Stations shall be meter box- retrofit style. Each station will install into existing meter yokes, and water meters can then be re-set into sampling station sealer. To begin water flow, a portable rod with a female coupler will thread onto a male valve connected to the station. This connection will require a turning motion only, with no pushing or pulling needed. Each male valve will be located before the water meter, have an auxiliary shut-off valve, and be protected by a (PVC or brass) cover when not in use. Each station shall have a dual check valve between water meter and residence. Portable rod will be brass and each furnished with protective plug and carrying case. One rod will be furnished for every ___ stations. Stations shall be manufactured by Kupferle Foundry Company, St. Louis, Mo. Model #94WM, or approved equal.

NO.	DATE	REVISION	THIS DRAWING IS THE PROPERTY OF THE KUPFERLE FOUNDRY COMPANY. IT IS NOT TO BE USED OR DUPLICATED WITHOUT PERMISSION OF THE OWNER.

ECLIPSE
 SINCE 1852
THE KUPFERLE FOUNDRY COMPANY
 2511 NORTH 9TH STREET / ST. LOUIS, MISSOURI 63102
 314-231-8738 FAX# 314-231-2820
 http://www.hydrants.com
 DRAWN P.L. APPROVED DATE 3-4-08
 PART NO. #94WM SAMPLING STATION SCALE TO FIT