

WATER QUALITY SOLUTIONS!

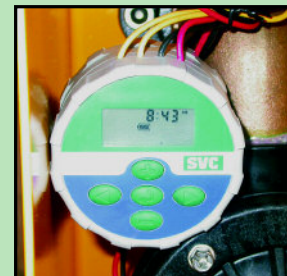
To meet the new and future regulations, new tools and strategies may be required. Free-standing sampling stations, used in combination with programmable flushing, make monitoring and maintaining water quality very easy.



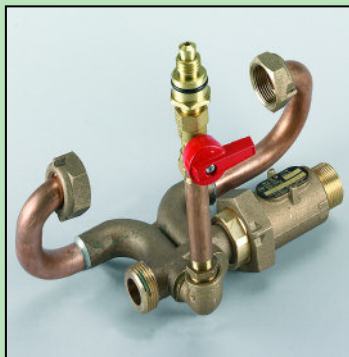
The Eclipse #88 Sampling Station makes sample collection in freezing climates FAST and SAFE. Sample directly off the main without worrying about site contamination or bothering customers. Ask for #88WC in warm climates.



The Eclipse #9400 is a permanent, programmable flushing device for cold climates. Install on stagnant dead-ends to maintain chlorine residuals year-round. Also helps pass disinfectant by-products. Ask for #9400WC in warm climates. #9800 flushes direct to sewer.



Digital controller operates with 9-volt battery



The MainGuard #94WM Sampling Station installs into an existing meter box. The meter is then "reset" into the device. A portable probe rod threads onto the station to begin water flow. Available in 5/8", 3/4" and 1" sizes. Call Teri or Carrie for a demo.



PVC cover



Probe Rod



The Eclipse #9700 is a portable, programmable flushing device which installs onto a fire hydrant. Can be used throughout warm months on troublesome dead-ends, or as a great flushing tool after water main breaks.



Call Kelly for a demo.

SAMPLINGSTATIONS.COM




ESTABLISHED 1857

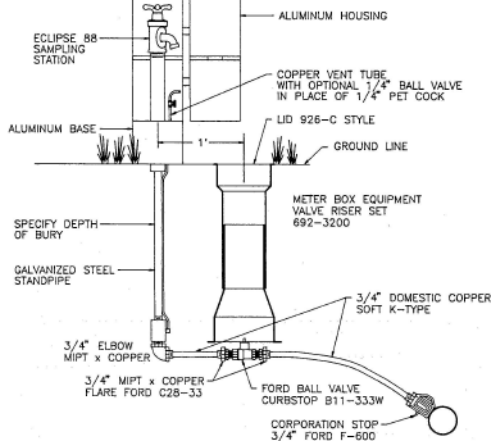
THE KUPFERLE FOUNDRY COMPANY

 2511 NORTH 9TH STREET / ST. LOUIS, MISSOURI 63102
 314-231-8738 FAX# 314-231-2820
1-800-231-3990



INSTALLATION AND SPECIFICATIONS

ECLIPSE NO. 88 SAMPLING STATION



Sampling Stations shall be _____' bury, with a 3/4" FIP inlet, and a (3/4" hose or unthreaded) nozzle.

All stations shall be enclosed in a lockable, nonremovable, aluminum-cast housing.

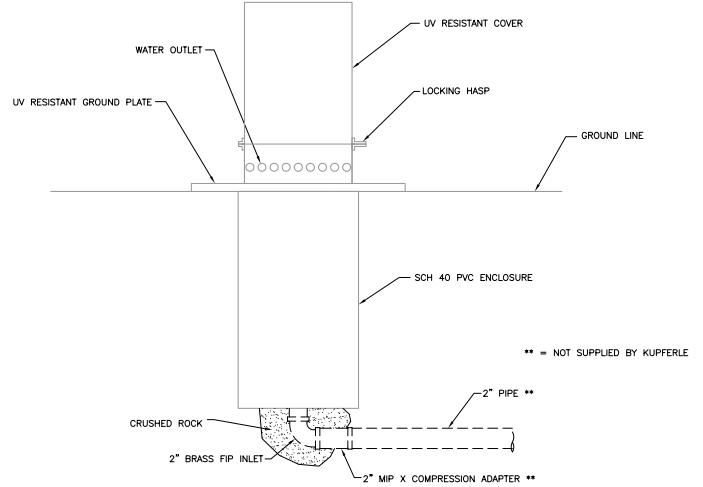
When opened, the station shall require no key for operation, and the water will flow in an all brass waterway.

All working parts will also be of brass and be removable from above ground with no digging. Exterior piping shall be galvanized steel (brass pipe also available).

A copper vent tube will enable each station to be pumped free of standing water to prevent freezing and to minimize bacteria growth.

Eclipse No. 88 Sampling Station shall be manufactured by Kupferle Foundry, St. Louis, MO 63102.

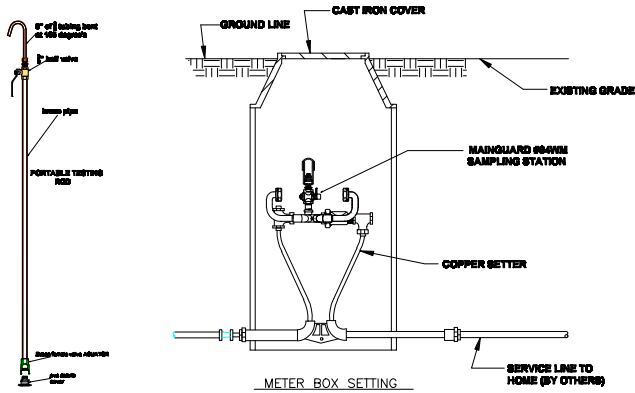
#9400 - 2" AUTOMATIC FLUSHING DEVICE (ALL - CLIMATE)



** = NOT SUPPLIED BY KUPFERLE

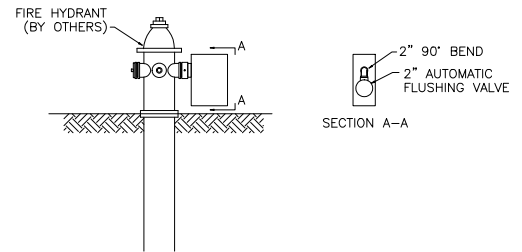
AUTOMATIC FLUSHING DEVICE SHALL HAVE A 2" BRASS FIP INLET, LEADING VERTICALLY INTO A 2" AUTOMATIC SOLENOID VALVE. AUTOMATIC SOLENOID VALVE SHALL HAVE INTERNAL SELF-CLEANING DEBRIS SCREEN, AND HAVE A 220 PSI RATING. EACH UNIT SHALL BE FURNISHED WITH A STAND-ALONE VALVE CONTROLLER. VALVE CONTROLLER WILL NOT REQUIRE A SECOND HAND-HELD DEVICE FOR PROGRAMMING, MUST HAVE A MINIMUM OF 9 POSSIBLE FLUSHING CYCLES PER DAY, SHALL BE SUBMERSIBLE TO 12 FEET, OPERATE WITH A 9 VOLT BATTERY, AND HAVE RESIN-SEALED ELECTRICAL COMPONENTS. SOLENOID SHALL HAVE NO LOOSE PARTS WHEN REMOVED FROM VALVE. EACH UNIT SHALL HAVE A DOUBLE-VALVE, ALL BRASS SAMPLING POINT, AND A UV RESISTANT GROUND PLATE. WATER SHALL EXIT HORIZONTALLY THROUGH HOLES LOCATED NEAR GROUNDLINE AND WATER FLOW SHALL BE ADJUSTABLE WITHOUT ACCESSING 2" SOLENOID VALVE. REMOVAL OF 2" SOLENOID VALVE SHALL BE POSSIBLE VIA AN O-RING CONNECTOR LOCATED UNDER THE VALVE AFTER REMOVAL OF STAINLESS STEEL ACCESS PLATE. UNDERGROUND PARTS SHALL BE HOUSED IN A PVC ENCLOSURE AND EACH UNIT SHALL BE SELF-DRAINING, NON-FREEZING. ALL ABOVE-GROUND COMPONENTS SHALL BE CONTAINED WITHIN A UV-RESISTANT LOCKING DOME COVER, AS MANUFACTURED BY KUPFERLE FOUNDRY COMPANY MODEL #9400, ST. LOUIS, MO, 1-800-231-3990, OR APPROVED EQUAL.

#94WM METER BOX SAMPLING STATION



Sampling Stations shall be meter box-retrofit style. Each station will install into existing meter yokes, and water meters can then be re-set into sampling station setting. To begin water flow, a portable rod with a female coupler will screw onto a male valve connected to the station. This connection will require a turning motion only, with no pushing or pulling needed. Each male valve will be located before the water meter, have an auxiliary shut-off valve, and be protected by a (PVC or brass) cover when not in use. Each station shall have a dual check valve between water meter and residence. Portable rod will be brass and each furnished with protective plug and carrying case. One rod will be furnished for every _____ stations. Stations shall be manufactured by Kupferle Foundry Company, St. Louis, Mo. model#94WM, or approved equal.

HYDRANT WITH AUTO FLUSHER



AUTOMATIC FLUSHING DEVICES SHALL BE ATTACHED TO HYDRANT IN THE FOLLOWING LOCATIONS. _____ A 2-1/2" NST SWIVEL CONNECTION WILL LEAD INTO A 2" AUTOMATIC SOLENOID VALVE. AUTOMATIC SOLENOID VALVE SHALL HAVE INTERNAL SELF-CLEANING DEBRIS SCREEN, AND HAVE A 220 PSI RATING. EACH UNIT SHALL BE FURNISHED WITH A STAND-ALONE VALVE CONTROLLER. VALVE CONTROLLER WILL NOT REQUIRE A SECOND HAND HELD DEVICE FOR PROGRAMMING, MUST HAVE A MINIMUM CAPABILITY OF 9 POSSIBLE FLUSHING CYCLES PER DAY FOR UP TO FOUR HOURS EACH FLUSH, SHALL BE SUBMERSIBLE TO 12 FEET, OPERATE WITH A 9 VOLT BATTERY, AND HAVE RESIN-SEALED ELECTRICAL COMPONENTS. SOLENOID SHALL HAVE NO LOOSE PARTS WHEN REMOVED FROM VALVE. ALL COMPONENTS SHALL BE HOUSED INSIDE AN ALUMINUM, LOCKABLE ENCLOSURE, WITH 3" PERFORATIONS IN BOX FLOOR TO DIFFUSE FLUSHING WATER. REMOVABLE FLOOR PLATE SHALL ALLOW TO A 2" FIP OUTLET IF NEEDED. EACH BOX SHALL BE POWDER-COATED, AND COLOR SHALL BE (RED OR YELLOW) AS MANUFACTURED BY KUPFERLE FOUNDRY COMPANY MODEL #9700, ST. LOUIS, MO, 1-800-231-3990, OR APPROVED EQUAL.

ALL DRAWINGS DOWNLOADABLE FROM WEBSITE.

SAMPLINGSTATIONS.COM

